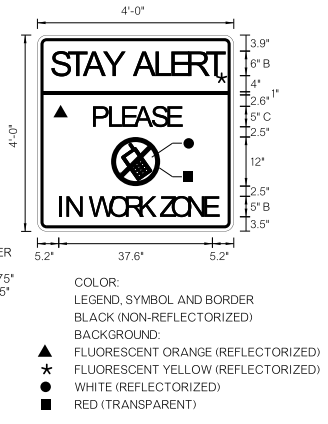
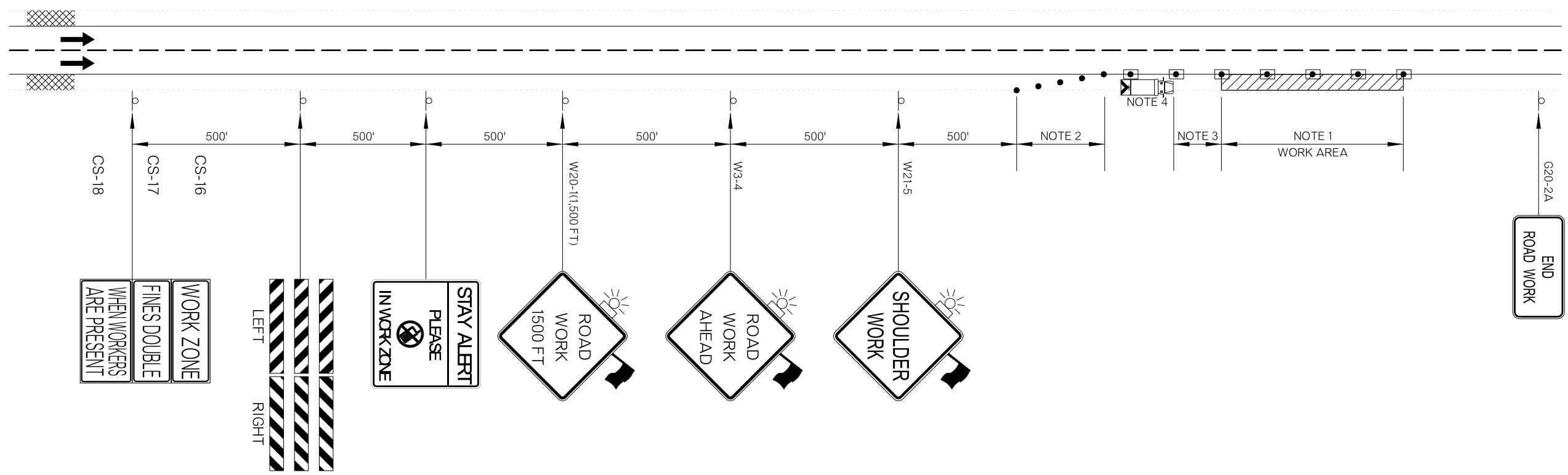


REVISIONS		
REV. NO.	DESCRIPTION	DATE
1	UPDATED JP NUMBER	8/5/16



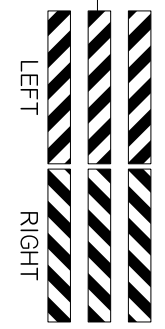
BORDER
R=1.5"
TH=0.75"
IN=0.75"

COLOR:
LEGEND, SYMBOL AND BORDER
BLACK (NON-REFLECTORIZED)
BACKGROUND:
▲ FLUORESCENT ORANGE (REFLECTORIZED)
★ FLUORESCENT YELLOW (REFLECTORIZED)
● WHITE (REFLECTORIZED)
■ RED (TRANSPARENT)

CS-18
WHEN WORKERS
ARE PRESENT

CS-17
FINES DOUBLE

CS-16
WORK ZONE



STAY ALERT
PLEASE
IN WORK ZONE

ROAD
WORK
1500 FT

ROAD
WORK
AHEAD

SHOULDER
WORK

END
ROAD WORK

NOTE 1
MAXIMUM SPACING BETWEEN CHANNELIZING DEVICES (FEET) SHALL BE TWICE THE POSTED SPEED LIMIT (M.P.H.) WITH THE FOLLOWING EXCEPTIONS. SPACING SHALL NOT EXCEED 50 FEET FOR CONES OR TUBE CHANNELIZERS. SPACING SHALL NOT EXCEED 75 FEET FOR CHANNELIZER CONES, SPACING SHALL NOT EXCEED 100 FEET FOR TYPE II BARRICADES, VERTICAL PANELS OR DRUMS.

NOTE 2
A MINIMUM OF FIVE (5) CHANNELIZING DEVICES SHALL BE PLACED THRU THIS AREA.

NOTE 3
A LONGITUDINAL BUFFER AREA, TO ALLOW WORKERS TIME TO EVACUATE THE WORK AREA, SHOULD BE PROVIDED. FOR GUIDELINES ON SETTING THE LENGTH OF THIS BUFFER, SEE STANDARD DRAWING TCS2-1-(LATEST REVISION). ACTUAL LENGTH SHALL BE DETERMINED BY FIELD CONDITIONS AND THE JUDGEMENT OF THE ENGINEER.

NOTE 4
THE SHADOW VEHICLE SHOWN AT THE BEGINNING OF THE WORK AREA SHALL BE IN PLACE WHENEVER WORKERS ARE IN THE WORK AREA. THIS VEHICLE SHALL BE REMOVED FROM THE ROADWAY WHENEVER WORKERS ARE NOT IN THE WORK AREA. THIS VEHICLE SHALL BE EQUIPPED WITH AN ACTUATED FLASHING OR REVOLVING YELLOW LIGHT.

FOR ADDITIONAL INFORMATION ABOUT TAPER LENGTHS AND SPACING OF CHANNELIZING DEVICES, SEE STANDARD DRAWING TCS2-1-(LATEST REVISION).

NOTE TO SCALE

KEY:

	SIGN
	WORK AREA
	SHADOW VEHICLE
	TRUCK MOUNTED ATTENUATOR
	DRUM
	CHANNELIZING CONE

TRAFFIC CONTROL DETAIL	Drawn	JF	6/14
	Design	JF	6/14
	Checked	AA	6/14
	TRAFFIC ENGINEERING		